

# seselec 45 YEARS



# CORPORATE PRESENTATION



2024

# Who we are

With **45 years** of experience, in SESELEC we specialize in bringing **EPC electromechanical solutions & services**, to private and public customers, in the energy, electricity, industry & commerce sectors.

**Our general references are as follows:**

**70  
SS**

**HV Electrical Substations**  
(public and private)  
in the 2014-2022 period.

**4500  
MVA's**

**MVA's**  
Interconnected since 2018.

**2.5  
GW**

**Solar PV**  
EPC/BOS photovoltaic projects installed  
(up to 150 MWp in FULL EPC).

**5000  
kms**

**Transmission & Distribution Lines – Installed HV**  
(115/230/400kV) and MV lines as well as  
Submarine Cable and OPGW.

**20 K**

**LED – Public lighting**  
Systems installed and commissioned.



# History

- In **1979**, SESELEC starts activities in México under the name of **CEGELEC**.
- In **2009** it was acquired by Mexican stakeholders changing its name to **SESELEC**.
- SESELEC re-starts operations in **2010** with only **10 collaborators**; nowadays SESELEC has a multidisciplinary staff of about **500 collaborators** within Mexico, Spain, Portugal & Chile.



*We have developed projects all around Mexico from **Chiapas to Baja California**; in Latin American countries like: **Cuba, Nicaragua, Chile, Panama and Colombia**.*

•  Mexico 2009

•  Chile 2014

•  Spain 2019

•  Portugal 2022

➤  EMEA 2025

➤  USA 2025



*Since **2019** SESELEC has establishments in **Europe** to undertake projects in **Spain and Portugal**.*



# SESELEC's expertise

We are an (**HV/MV/LV**) electromechanical **EPC company** in projects within the Electrical and Industrial Sectors.

**E**



**P**



**C**



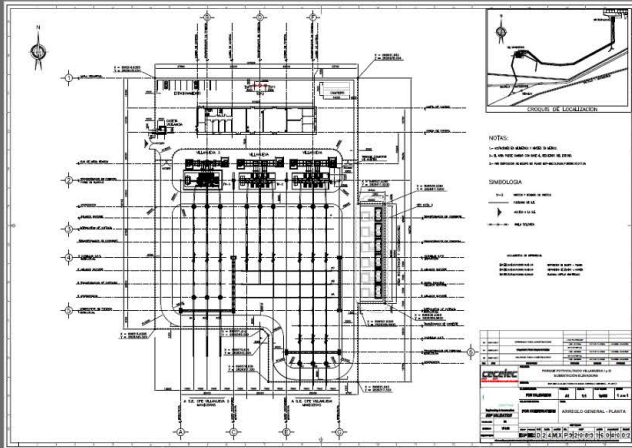
All executed with Project Management expertise and in full respect of quality, safety, health and the environment standards.

**+ COMMISSIONING**

**+ MAINTENANCE**

# Engineering

We make **Basic Engineering and/or Detail in house**, we have **all disciplines** and **specialties**.



## Disciplines:

- Civil
- Electromechanical
- Telecommunications
- Protection, Control y Measuring
- Electrical Estudios
- Transmission & Distribution Line
- Photovoltaic
- Commissioning

- By doing the engineering, we are certain that it **can be built and is made under all national and international regulations**, as required.
- Absolute communication between disciplines since all are concentrated in the main offices of SESELEC, avoiding interface problems.
- Those responsible for each discipline have extensive **experience in the design of Substations and Lines** for **CFE** and **Private**.
- In addition to performing engineering at home, our engineers have the **ability to implement it directly on site**, as part of the construction and commissioning group.
- We identify, together with our suppliers, **all new solutions and improvements** in their implementations.
- Through the analysis "**Lessons Learned**" we have a continuous improvement.



# Design | Software



- CAD
- 3D
- BIM
- Virtual Reality
- PV Case
- PVSYST

- **AUTOCAD**  
3D modeling, 2D plans and 3D digital format and for printing. 3D for the project design and 2D for the development of technical documentation.
- **REVIT**  
3D Modeling, \*BIM-4D Planning.
- **SKETCHUP**  
3D Modeling.
- **DIG SILENT**  
Electrical studies such as: Short Circuit, Protection Coordination, Reactive Compensation, Harmonics, Power Flows and Electrical Losses.
- **LUMION**  
Virtual Tours in 360 ° and 180°.
- **\*NAVISWORK**  
BIM-4D Planning, 5D Costs This project management technique focused on BIM has the potential to improve the management and delivery of projects of any size or complexity.
- **\*REVIT LIVE**  
Virtual Reality.



# Procurement | Logistics



Having the **right supplies**, at the exact moment they are required, is key to timely and in-form projects' delivery.

## Purchasing

- All the Procurement carried out by SESELEC is in **strict compliance with the applicable standards and technical specifications** of the Client and / or CFE and at the times according to the general program of the Project
- International market logistics and partners.

## Expedition

- Factory Tests: Our expeditors and specialists from different disciplines receive the equipment at the factory ensuring its Quality.
- Logistics: Transportation, delivery and proper storage.
- Reception of critical equipment on site: Power Transformers, Primary Equipment, PC&M ...





# Construction | Civil Works

In SESELEC we have the expertise and resources **to execute the Civil Works**. This **allows to shorten the schedules, ensure delivery times and guarantee the quality** of the work.

- Foundations
- Platforms
- Buildings
- Access Roads
- Posts Ramming for PV panels...





# Construction | Electromechanical Assembly

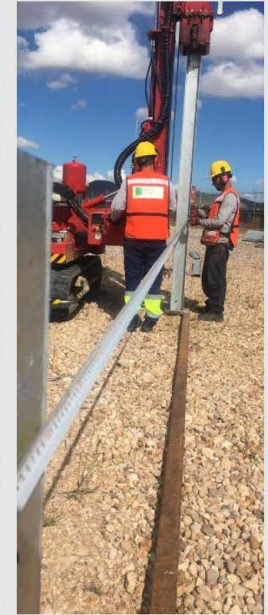


We are experts in the **electromechanical assembly of Substations and Transmission Lines**, including **OPGW**.





# Construction | BOS/EPC for PV Plants



**Engineering, Procurement, Civil works,  
Electrical, Mechanical,  
Pre/Commisioning, Start-up, O&M**

Our fleet on **Pile-Driving Machines 12**



# Construction | Conventional Power Plants



SESELEC can execute the Step up Substation in EPC, BOPE and Interconnection.

For Conventional Plants Thermal, Hydro, Cogen, Geothermal,... SESELEC can perform in EPC the Step-up Substation, EBOP and Interconnection.

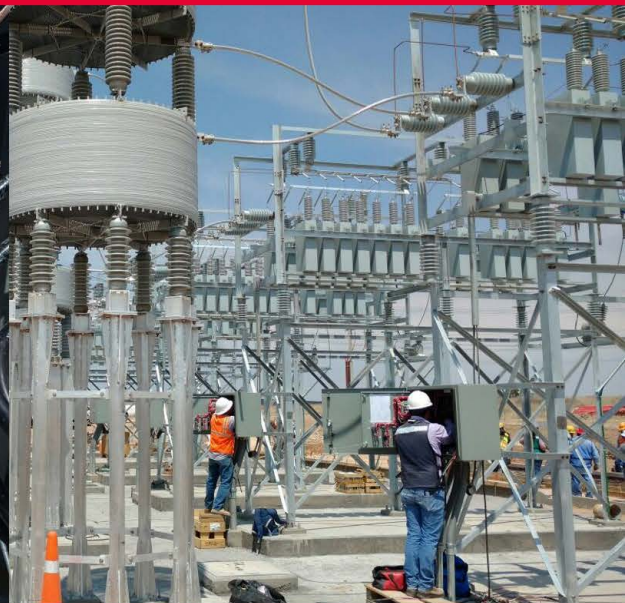


# Construction | Commissioning /



- In SESELEC we have a specialized Commissioning Area within Engineering.
- Our engineers have the necessary equipment to perform the tests of all the equipment, from PC&M programming ... up to energization.

Our Commissioning Engineers are certified by CENACE to operate CFE Switchyards.



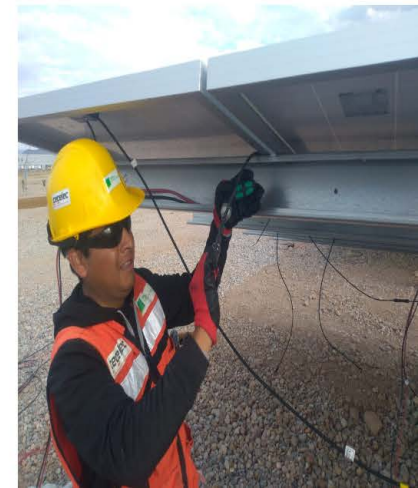
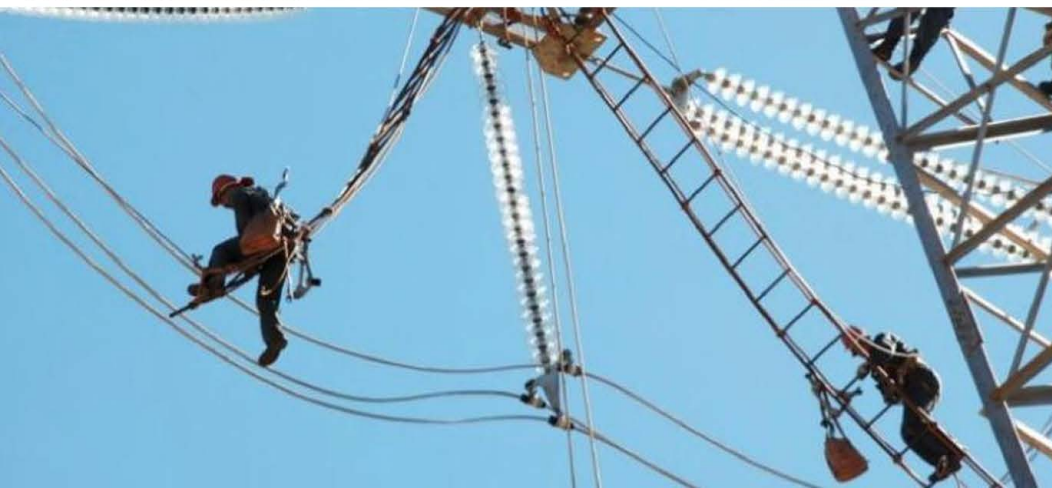


# Maintenance | Services

SESELEC has **specialized departments** and **certified personnel** to meet the requirements of our customers in high, medium, and low voltage service; providing high quality and specialized services for **Predictive and Corrective Maintenance**. Our high trained and experienced staff guarantees the quality of our service for both **Electric Substations and Transmission Lines**, as well in **Photovoltaic Plants**.

T&D . PV | Maintenance

- Maintenance of Electric Substations and Transmission Lines 115 kV, 230 kV and 400 kV.
- PV Plants Maintenance 0.5 kW to 250 MW.
- Testing, monitoring, analysis and reporting. 24-hour availability of local personnel for 24-hours response with available stocks to meet any planned or extraordinary need.





Coordination and Management with all Grid Operator Areas in interconnection processes.

Extensive knowledge of the Grid Operator operational guidelines for the interconnection of generation plants.

- In SESELEC **the Project Manager PM is the key collaborator, who manages the project in its entirety**, from the signing of the contract, until its completion and energization.
- Our PMs **maintain a close relationship with Grid Operators GO and can directly manage, with the heads of each zone**, all the power outage programs, engineering and commissioning, among other issues, of the works that will be assigned to the GO.



Our way of executing the projects positions us as **one of the best and most reliable EPC companies** for the Electricity Sector in México, Spain and Latin America.



# Works Schedule Compliance – Golden Rule



- **Delivering all projects always on time is the Golden Rule of SESELEC.**
- For each project a program is developed that begins from the **studies, engineering, procurement, construction, assembly and commissioning**; which is followed rigorously and continuously to comply with each of the milestones and thus be able to reach the contractual date.
- Thanks to the strict fulfillment of the program, we have managed to deliver even before time, some projects that have implied great challenges and benefits for our Clients.

At SESELEC, we **always deliver on time and in manner** each project entrusted to us by our Clients, complying with the highest standards of QHSE.



# Quality, Security, Health and Environment

At **SESELEC** We have an **Integral Management System “SGI” in Spanish** which assures the compliance of all the Quality, Security, Health and Environmental regulations and procedures for each of our projects and in all our internal procedures.



INTEGRAL MANAGEMENT SYSTEM  
Certified

About 7,500,000 HH men hours in our projects without accidents.  
Today we have more than 2 millions of HH without accidents.

**ISO 9001**  
Sistema de Gestión de Calidad

APROBACIÓN DE CALIDAD  
REFERENCIA: CERT-20487  
Folio: 230529-1

**Assay Register**  
CERTIFICATION COMPANY  
FOR QUALITY ASSESSMENT

**ISO 9001:2015 – SISTEMA DE GESTIÓN DE CALIDAD**  
Assay Register Certifica A:  
**seselec**  
**SERVICIOS & SOLUCIONES ELECTROMECÁNICAS, S.A. DE C.V.**  
Pasaje de la Reforma No. 195, 1er Piso, Local B, Lomas de Chapultepec 1ra. Sección, C.P. 11000, Alameda Miguel Alemán, Ciudad de México.

POR HABER CUMPLIDO CON LOS REQUISITOS DE LA NORMA INTERNACIONAL ISO 9001:2015  
IT BEEN ASSESSED AND FOUND BEING IN ACCORDANCE WITH THE QUALITY MANAGEMENT SYSTEM REQUIREMENTS

**ALCANCE**  
FOR THE FOLLOWING ACTIVITIES

PROYECTOS EPC (ENGINEERING, PROCUREMENT & CONSTRUCTION) QUE INCLUYEN: INGENIERÍA, SUMINISTRO, INSTALACIÓN Y PUESTA EN SERVICIO A BASE DE SISTEMAS ELÉCTRICOS AT, MT, BT, AUTOMATIZACIÓN A CONTROL, PLANTAS FOTOVOLTAICAS (BOS, EPC O EN COBERTA) Y TODO TIPO DE INSTALACIONES PV, TELECOMUNICACIONES, SISTEMAS ELECTROMECÁNICOS, SISTEMAS DE ALMACENAMIENTO DE ENERGÍA (BESS), ASÍ COMO SERVICIOS DE OPERACIÓN Y MANTENIMIENTO GLOBAL, MODERNIZACIÓN, ESTUDIOS Y REAFORMAMIENTO PARA PROYECTOS DE TRANSMISIÓN, DISTRIBUCIÓN Y GENERACIÓN ELÉCTRICA CONVENCIONAL Y CON ENERGÍAS RENOVABLES, ASÍ COMO SOLUCIONES PARA EL CUMPLIMIENTO DEL CÓDIGO DE RED EN LOS SECTORES ELÉCTRICO, INDUSTRIAL Y DE INFRAESTRUCTURA.

Original Certifications Since 2017.  
Ciclo de Asesoramiento: 2023-2026.  
Fecha de Emisión: 29 de Mayo del 2023.  
Fecha de Vencimiento: 29 de Mayo del 2026.  
Vigencia 3 años  
Certification Program: Single site.

**CERTIFICADO**

**IAF** **ema**  
MEMBER OF THE

**NMX-CC-9001-IMNC-2015 GESTIÓN DE CALIDAD**  
Standards and Regulations  
Temperatura 12 11 80 02 De Vía Pública Santa Lucía, C.P. 03030 2206 México T. 01 55 584601 | info@assayregister.com | www.assayregister.com

**ISO 14001**  
Sistema de Gestión Ambiental

APROBACIÓN AMBIENTAL  
REFERENCIA: CERT-10048  
Folio: 230529-2

**Assay Register**  
CERTIFICATION COMPANY  
FOR ENVIRONMENTAL ASSESSMENT

**ISO 14001:2015 – SISTEMA DE GESTIÓN AMBIENTAL**  
Assay Register Certifica A:  
**seselec**  
**SERVICIOS & SOLUCIONES ELECTROMECÁNICAS, S.A. DE C.V.**  
Pasaje de la Reforma No. 195, 1er Piso, Local B, Lomas de Chapultepec 1ra. Sección, C.P. 11000, Alameda Miguel Alemán, Ciudad de México.

POR HABER CUMPLIDO CON LOS REQUISITOS DE LA NORMA INTERNACIONAL ISO 14001:2015  
IT BEEN ASSESSED AND FOUND BEING IN ACCORDANCE WITH THE ENVIRONMENTAL MANAGEMENT SYSTEM REQUIREMENTS

**ALCANCE**  
FOR THE FOLLOWING ACTIVITIES

PROYECTOS EPC (ENGINEERING, PROCUREMENT & CONSTRUCTION) QUE INCLUYEN: INGENIERÍA, SUMINISTRO, INSTALACIÓN Y PUESTA EN SERVICIO A BASE DE SISTEMAS ELÉCTRICOS AT, MT, BT, AUTOMATIZACIÓN A CONTROL, PLANTAS FOTOVOLTAICAS (BOS, EPC O EN COBERTA) Y TODO TIPO DE INSTALACIONES PV, TELECOMUNICACIONES, SISTEMAS ELECTROMECÁNICOS, SISTEMAS DE ALMACENAMIENTO DE ENERGÍA (BESS), ASÍ COMO SERVICIOS DE OPERACIÓN Y MANTENIMIENTO GLOBAL, MODERNIZACIÓN, ESTUDIOS Y REAFORMAMIENTO PARA PROYECTOS DE TRANSMISIÓN, DISTRIBUCIÓN Y GENERACIÓN ELÉCTRICA CONVENCIONAL Y CON ENERGÍAS RENOVABLES, ASÍ COMO SOLUCIONES PARA EL CUMPLIMIENTO DEL CÓDIGO DE RED EN LOS SECTORES ELÉCTRICO, INDUSTRIAL Y DE INFRAESTRUCTURA.

Original Certifications Since 2017.  
Ciclo de Asesoramiento: 2023-2026.  
Fecha de Emisión: 29 de Mayo del 2023.  
Fecha de Vencimiento: 29 de Mayo del 2026.  
Vigencia 3 años  
Certification Program: Single site.

**CERTIFICADO**

**IAF** **ema**  
MEMBER OF THE

**NMX-SAA-14001-IMNC-2015 GESTIÓN AMBIENTAL**  
Standards and Regulations  
Temperatura 12 11 80 02 De Vía Pública Santa Lucía, C.P. 03030 2206 México T. 01 55 584601 | info@assayregister.com | www.assayregister.com

**ISO 45001**  
Sistema de Gestión de Seguridad y Salud en el Trabajo

APROBACIÓN DE SEGURIDAD Y SALUD  
REFERENCIA: CERT-10049  
Folio: 230529-3

**Assay Register**  
CERTIFICATION COMPANY  
FOR OCCUPATIONAL SAFETY AND HEALTH ASSESSMENT

**ISO 45001:2018 – SISTEMA DE GESTIÓN SEGURIDAD Y SALUD EN EL TRABAJO**  
Assay Register Certifica A:  
**seselec**  
**SERVICIOS & SOLUCIONES ELECTROMECÁNICAS, S.A. DE C.V.**  
Pasaje de la Reforma No. 195, 1er Piso, Local B, Lomas de Chapultepec 1ra. Sección, C.P. 11000, Alameda Miguel Alemán, Ciudad de México.

POR HABER CUMPLIDO CON LOS REQUISITOS DE LA NORMA INTERNACIONAL ISO 45001:2018  
IT BEEN ASSESSED AND FOUND BEING IN ACCORDANCE WITH THE OCCUPATIONAL HEALTH AND SAFETY MANAGEMENT SYSTEMS – REQUIREMENTS ISO 45001:2018

**ALCANCE**  
FOR THE FOLLOWING ACTIVITIES

PROYECTOS EPC (ENGINEERING, PROCUREMENT & CONSTRUCTION) QUE INCLUYEN: INGENIERÍA, SUMINISTRO, INSTALACIÓN Y PUESTA EN SERVICIO A BASE DE SISTEMAS ELÉCTRICOS AT, MT, BT, AUTOMATIZACIÓN A CONTROL, PLANTAS FOTOVOLTAICAS (BOS, EPC O EN COBERTA) Y TODO TIPO DE INSTALACIONES PV, TELECOMUNICACIONES, SISTEMAS ELECTROMECÁNICOS, SISTEMAS DE ALMACENAMIENTO DE ENERGÍA (BESS), ASÍ COMO SERVICIOS DE OPERACIÓN Y MANTENIMIENTO GLOBAL, MODERNIZACIÓN, ESTUDIOS Y REAFORMAMIENTO PARA PROYECTOS DE TRANSMISIÓN, DISTRIBUCIÓN Y GENERACIÓN ELÉCTRICA CONVENCIONAL Y CON ENERGÍAS RENOVABLES, ASÍ COMO SOLUCIONES PARA EL CUMPLIMIENTO DEL CÓDIGO DE RED EN LOS SECTORES ELÉCTRICO, INDUSTRIAL Y DE INFRAESTRUCTURA.

Original Certifications Since 2017.  
Ciclo de Asesoramiento: 2023-2026.  
Fecha de Emisión: 29 de Mayo del 2023.  
Fecha de Vencimiento: 29 de Mayo del 2026.  
Vigencia 3 años  
Certification Program: Single site.

**CERTIFICADO**

**IAF** **ema**  
MEMBER OF THE

**NMX-SAST-45001-IMNC-2018 GESTIÓN DE LA SEGURIDAD Y SALUD EN EL TRABAJO.**  
Standards and Regulations  
Temperatura 12 11 80 02 De Vía Pública Santa Lucía, C.P. 03030 2206 México T. 01 55 584601 | info@assayregister.com | www.assayregister.com

We are an ISO certified company since 2016 in the following management standards.

ISO 9001:2015;  
ISO 14001:2015; &  
ISO 45001:2018.



# Health and Safety



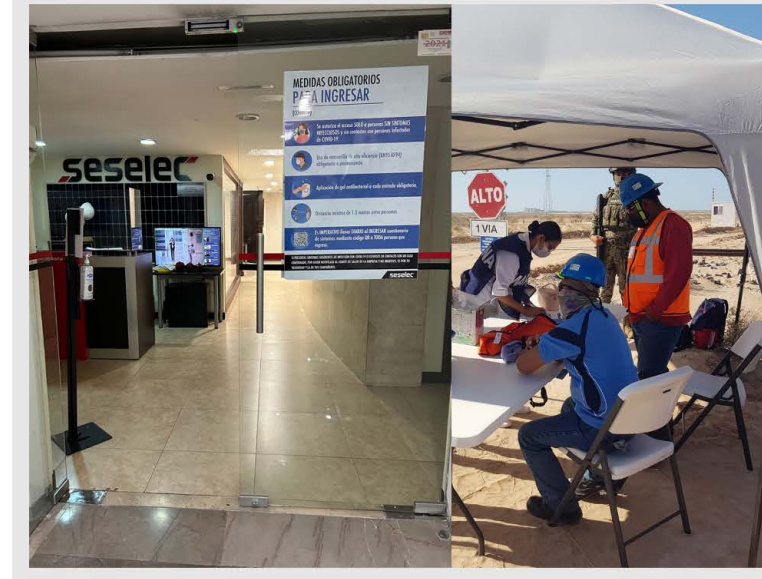
**We always go one step further to ensure the well being of our collaborators.**

## 1. Mandatory daily Safety Induction

Mandatory daily Safety Induction Every day, in all our projects, we carry out 10-minute talks to emphasize safety issues and make workers aware of their health and safety, as well as to give an adequate induction to new workers. Additionally, a brief conditioning is carried out both to start the day correctly and to help detect any potential discomfort before starting their work.

## 2. Safety and Health, both on site and in offices

In all Seselec offices, workers are made aware daily either from their arrival and temperature measurement, as well as with the installation of posters, the installation of machines antibacterial gel dispensers or even the free distribution of masks. In the same way, collaborators are urged to always Promote a healthy, respectful and positive work environment for the entire environment. Our offices are a safe and healthy work space for collaborators, clients and suppliers.





# Work Safety



At SESELEC, the safety of our collaborators is a top priority.

We own 7 equipped ambulances, each of which is operated by 2 paramedics, 14 in total who have been contracted by Seselec.

The mobile medical service has qualified paramedics to provide timely care to personnel who require it in the event of an emergency. **In the same way, it contributes to occupational health on site by providing dignified and humane treatment.**

In the same way, having medical teams in the area, whenever the project allows it, they have gone to attend various emergencies in the vicinity of the projects.





# Sustainability



At SESELEC we strive to constantly implement concrete measures and actions that help generate a positive impact **environmental, social and economic** in each place that receives us for the execution of our projects.

## Sustainable projects

In every Project SESELEC participates we take concrete actions in order to **reduce our imprint on the environment and the community**, thus creating a chain of value to our employees and the places that we work in. This positive impact is done through **garbage collection, reusing of wood and other packaging, courses at local communities, etc...**



# Why contracting SESELEC?

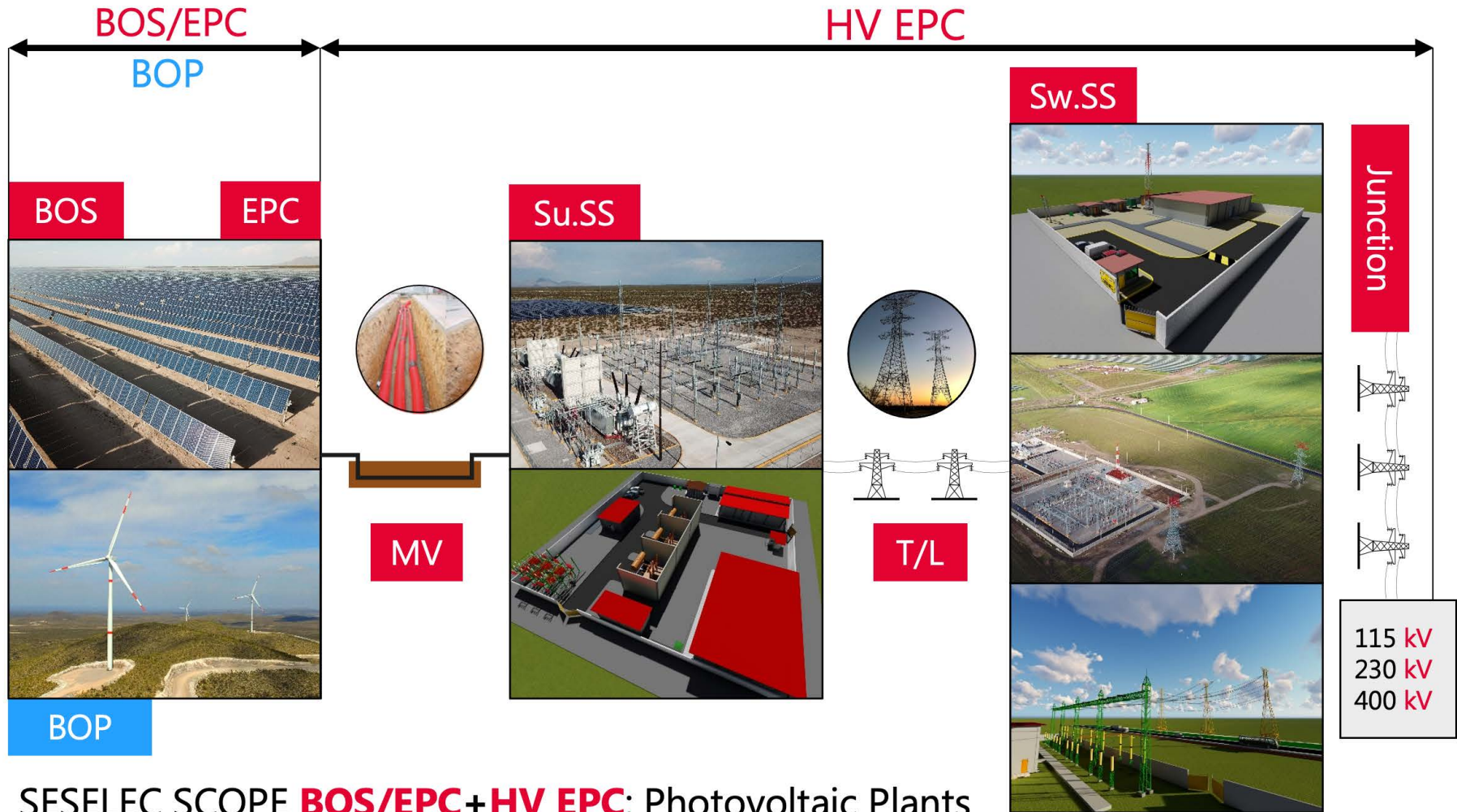
Our best practices distinguish us, **we built trust and confidence** within our Customers by becoming true allies for the execution of their projects. Our Customers have our entire support at every step, and we **always go further** to achieve their objectives in time and manner.

We do this with:

<b>S</b> pecialty	We are a true Electric EPC T&D up to 400 kV and BOS Photovoltaic up to 150 MW
<b>E</b> xpertise	Own Engineering   PM   Procurement   Civil Works   Commissioning
<b>S</b> afety	Maximum priority that translates into higher Quality, Productivity and Competitiveness. Autonomy to obtain financing
<b>E</b> xperience	Energy and Industry Sectors LV, MV, HV, Telecom's, OPGW...
<b>L</b> ocal	More than 40 years executing projects in Mexico, Spain, Portugal and LATAM   Relationship with CFE, CENACE, ...
<b>E</b> xcellence	Committed to the efficient delivery of all interconnected projects
<b>C</b> ommitment	With Clients, Employees and Partners in full respect of the Environment



# Cooperation | Scheme



SESELEC SCOPE **BOS/EPC+HV EPC**: Photovoltaic Plants

SESELEC + **PARTNER BOP+HV EPC**: Wind Farms



**We are an expert team working for a common goal:**

“To be the Reference and Long Term Partner for Developers and Main Contractors for the engineering, construction and interconnection of Generation Power Plants as well as Transmission and Distribution Infrastructures, providing them with added value and vast experience”.







**The Golden Rule:**  
**On-time delivery of our 100%**  
**of our projects**

**seselec**



# Our Main Clients





# Our Projects

## WIND FARMS

Project	MW	Customer	Location	Year	Scope
Amistad I 230 kV	115 MVar	ENEL	Coahuila, MEX	2020-2021	▲▲▲▲▲▲▲▲
Amistad II 230 kV	100MW 50 MVar				
Amistad III & IV 230 kV	250 MW 69 MVar				
Dolores 230 kV	244 MW 80 MVar	ENEL	N.L. & Tamaulipas MEX	2020	▲▲▲▲▲▲▲▲
Salitrillos 138 kV/230 kV	103 MW	ENEL	Tamaulipas, MEX	2019	▲▲▲▲▲▲▲▲
El Espinal & Juchitan 115/230 kV	396 MW	VESTAS	Oaxaca, MEX	2017-2018	▲▲▲▲▲▲▲▲
La Bufa 230 kV	180 MW	MPG/GAMESA	Zacatecas, MEX	2015-2017	▲▲▲▲▲▲▲▲
Palo Alto 230 kV	180 MW	ENEL	Aguascalientes, MEX	2015-2016	▲▲▲▲▲▲▲▲
Vientos del Altiplano 400 kV	100 MW	ENEL	Zacatecas, MEX	2015-2016	▲▲▲▲▲▲▲▲
Los Altos 230 kV	50 MW 12 MVar	GRUPO DRAGON	Jalisco & Ags. MEX	2014	▲▲▲▲▲▲▲▲

## ENERGY EFFICIENCY

Project	Customer	Location	Year	Scope
Street Lighting, Leon	FIDE / SENER BANCO MUNDIAL	Guanajuato, MEX	2018	↕ 8,025
Street Lighting, Alc. M.H.	FIDE / SENER BANCO MUNDIAL	CDMX, MEX	2018	↕ 10,923
Reduccion de Perdidas, Phase 7	CFE	CDMX & Edo.Mex., MEX	2016-2018	↕ 14 Obras

## HYDROPOWER PLANTS

Project	MW	Customer	Location	Year	Scope
Generadora Fenix	235 MW	MOTA ENGL	Puebla, Michoacan, MEX	2020-2021	▲▲
San Rafael 115 kV	25 MW	ACCIONA	Nayarit, MEX	2014	▲
Santa Gertrudis 115 kV - EPC	5 MW	PROENERMEX	Veracruz, MEX	2008	▲▲▲▲
Las Truchas 34.5 kV	7MW	GOLDCORP	Durango, MEX	2008	▲▲▲
Botello 115 kV - EPC	9MW	CFE	Michoacan, MEX	2005	▲▲▲

## THERMAL & GEOTHERMAL POWER PLANTS

Project	MW	Customer	Location	Year	Scope
Valle Power I 230 kV	90 MW	EVM / TSK	Edo. de Mex., MEX	2014-2016	▲▲▲-GIS▲
CCI BCS III & BCS V 230 kV	86 MW	ACCIONA / CFE	Baja California Sur, MEX	2012-2016	▲▲▲
Domo de San Pedro 115 kV	25 MW	GRUPO DRAGON	Nayarit, MEX	2014	▲▲▲
CT BC II - 230kV	135 MW	ACCIONA / CFE	Baja California, MEX	2014	▲▲▲
Los Azufres II 115 kV	100 MW	CFE	Michoacan, MEX	2001	▲▲▲

## INDUSTRY

Project	MW	Customer	Location	Year	Scope
Viaducto Santa Catarina 115kV		GARZA PONCE	Nuevo Leon, MEX	2022	▲▲▲
Fermex 34.5 kV		LESSAFRE	Veracruz, MEX	2019	↕
Lakach 115 kV		ARENAL / PEMEX	Veracruz, MEX	2015	▲▲
Nestlé Gerber y Nestlé Helados 23/13.8 kV		NESTLÉ	Queretaro & Jalisco MEX	2012 - 2014	▲▲
Papeles Higienicos 230 kV		ESSITY / SCA	Hidalgo, MEX	2010	▲▲

## PHOTOVOLTAIC PLANTS

Project	MW	Customer	Location	Year	Scope
Escatron - BOS	103 MWp	REPSOL	Teruel, SPA	In Progress	▲▲
Balsicas - BOS	99 MWp	IBERDROLA	Murcia, SPA	In Progress	▲▲
Don Rodrigo - BOS	52 MW	QENERGY	Sevilla, SPA	In Progress	▲▲
Lote 11 - BOS	62 MW	IBERDROLA	Carregado, POR	In Progress	▲▲
Fuentes de la Alcarria - BOS	130 MW	IBERDROLA	Guadalajara, SPA	2023	▲▲
Puerto Peñasco I - 115 kV - FULL EPC	152 MW	CFE	Sonora, MEX	2023	▲▲▲▲▲▲▲▲
Alcochete 1 & 2 - EPC	45 MW	IBERDROLA	Alcochete, POR	2023	▲▲
Arenales - BOS	150 MW	IBERDROLA	Caceres, SPA	2022	▲▲
Insurgentes 115 kV - EPC	39 MW	INVENERGY	Baja California Sur, MEX	2022	▲▲▲▲
Campo Arañuelo III - BOS	40 MW	IBERDROLA	Caceres, SPA	2021	▲▲
Balvarena FV en Techumbre	584 kW	CGR	Queretaro, MEX	In Progress	▲▲
Balvarena EPC - Carport	500 kW	SIEMENS	Queretaro, MEX	2021	▲▲
Cuyoaco - BOS	270 MW	IBERDROLA	Puebla, MEX	2020	▲▲
Teruel - BOS	50 MW	IBERDROLA	Teruel, SPA	2020	▲▲
Pollux 115 kV	30 MW	REDEN SOLAR	N.L. & Coahuila, MEX	2019	▲▲▲▲▲▲▲▲
Magdalena II 230 kV	220 MW 30MVar	ENEL	Tlaxcala & Edo.Mex, MEX	2019	▲▲▲▲▲▲▲▲
Parque FV BMW 34.5 kV - EPC	5 MW	BAYWA	S.L.P., MEX	2018	▲▲
Pima Solar 115 kV - EPC	144 MW 30 MVar	IENOVA	Sonora & Sinaloa, MEX	2018	▲▲▲▲
Villanueva I & III - 400 kV	754 MWp 100 MVar	ENEL	Coahuila, MEX	2017	▲▲▲▲▲▲▲▲
Ometepe - EPC	500 kW	GPO. AVANZIA	Guerrero, MEX	2015	▲▲

- ▲ New Step-Up Substation
- ▲ Step-Up Substation Enlargement
- ▲ New Switchyard
- ▲ Switchyard Enlargement
- ▲ New Transmission Line
- ▲ Transmission line Recalibration
- † Collector Bus / Medium Voltage
- ▲ EBOP - BOS
- ⚡ Power Generation Works
- ↕ LED Lighting
- ▶ BESS
- 🌿 Maintenance

MEX - Mexico  
SPA - Spain  
POR - Portugal



At SESELEC we **always** deliver our projects in time and manner.

# Projects 2020-2024

**T&D**  
**ENEL GREEN POWER**  
"Amistad II"  
Wind Farms  
AT / LT 230 kV / **100 MW**  
Coahuila  
"Amistad III y IV"  
AT / LT 230 kV / **250 MW**  
2020 - 2021



**T&D**  
**ENEL GREEN POWER**  
Wind Farm "Dolores"  
AT / LT 230 kV / **244 MW**  
Coahuila  
2020

**T&D**  
**CONSTRUCTORA GARZA PONCE**  
Viaducto "Santa Catarina"  
**115 kV**  
Nuevo Leon  
2022



**T&D + EPC + BAT**  
**CFE**  
PV Plant  
"Puerto Peñasco I"  
**152 MW**  
Sonora  
2023



**T&D + EPC + BAT**  
**INVENERGY**  
PV Plant  
"Insurgentes"  
**39 MW**  
Baja California Sur  
2022



**INDUSTRIAL INSTALLATIONS**  
**BSM OPLAT**  
Installation  
Beta San Miguel  
San Luis Potosí, Mex  
2020



**T&D**  
**CGR**  
Balvanera  
PV on Roof  
**584 kW**  
Queretaro  
In Progress



**T&D**  
**SIEMENS**  
Balvanera  
Carport-EPC / **500 kW**  
Queretaro  
2021



**T&D**  
**GENERADORA FÉNIX**  
Thermoelectric  
"Lerma" **74 MW** Edo. Mex.  
"Tepexic" & "Patla" **45 MW** Puebla  
"Necaxa" **108 MW** Puebla  
Enlaces MEM  
2020



**BOS**  
**IBERDROLA**  
PV Plant  
"Cuyoaco"  
**270 MW**  
Puebla  
2020







# SPAIN



# PORTUGAL

# Projects 2020-2024



**IBERDROLA**  
PV Plant  
"Lote 11"  
**62 MW**  
Carregado  
**In Progress**



**IBERDROLA**  
PV Plant  
"Arenales"  
**150 MW**  
Cáceres  
**2022**



**IBERDROLA**  
Planta Fotovoltaica  
"Fuentes de la Alcarria"  
**130 MW**  
Guadalajara  
**2023**



**REPSOL**  
PV Plant  
"Escatron"  
**103 MWp**  
Teruel  
**In Progress**



**BOS + Trackers**

**IBERDROLA**  
PV Plant  
"Alcochete 1 y 2"  
**45 MW**  
Alcochete  
**2023**



**IBERDROLA**  
PV Plant  
"Teruel"  
**50 MW**  
Teruel  
**2020**



**IBERDROLA**  
PV Plant  
"Campo Arañuelo III"  
**40 MW**  
Cáceres  
**2021**



**QENERGY**  
PV Plant  
"Don Rodrigo"  
**52 MW**  
Sevilla  
**In Progress**



**IBERDROLA**  
PV Plant  
"Balsicas"  
**99 MWp**  
Murcia  
**In Progress**



# Projects Delivered in 2019

 **T&D**  
**ENEL GREEN POWER**  
"AMISTAD I"  
Wind Farms  
**49 MVAR**  
*Sistema de Compensación*  
Coahuila



 **T&D**  
**REDEN SOLAR**  
PV Plant "Pollux"  
*High Voltage / LT 115 kV / 36 MWp*  
Monterrey



 **T&D**  
**ENEL GREEN POWER**  
Wind Farm "Salitrillos"  
*High Voltage / LT 230 kV / 103 MW*  
Tamaulipas



 **BOS**  
**BAYWA (USA)**  
PV Plant "BMW"  
*B.O.S. / 5 MW*  
San Luis Potosi



 **T&D**  
**ENEL GREEN POWER**  
PV Plant "Magdalena II"  
*AT / OPGW / 220 MW*  
Tlaxcala





# Projects Delivered in 2018



**T&D**  
**IENOVA**  
PV Plant  
"PIMA SOLAR"  
144 MW  
Sonora



**T&D**  
**ENEL GREEN POWER**  
PV Plant  
"Villanueva I & III"  
AT/LT - 400 kV / **754 MW**  
Coahuila



**INDUSTRIAL INSTALLATIONS**  
**SCA**  
Higienic Paper Manufacturing Plant  
AT/LT 230kV / **20 MVA**  
Hidalgo



**ENERGY EFFICIENCY**  
**FIDE / SENER / BANCO MUNDIAL**  
"Public Lighting" León,  
Guanajuato & Ciudad de México



**ENERGY EFFICIENCY**  
**CFE**  
Losses reduction Energy  
metering & monitoring  
"Phase 7" Estado de Mexico  
y Ciudad de Mexico



**T&D**  
**VESTAS**  
Wind Farms  
"El Espinal" & "Juchitán"  
**396MW**  
Oaxaca



# Other Executed Projects 2014 - 2016

**T&D**

**ACCIONA / CFE**

Turbogas BCN II F1" **135 MW**  
 Thermolectric BCS III" **43 MW**  
 Thermolectric BCS F5" **47 MW**  
 Baja California  
 & Baja California Sur  
**2016**



**T&D**

**ENEL GREEN POWER**

Wind Farm "Vientos del Altiplano"  
 400 kV / **100 MW**  
 Zacatecas  
**2016**



**T&D**

**MPG / GAMESA**

Wind Farm "La Bufa"  
 230 kV / **180 MW**  
 Zacatecas  
**(2015 - 2016)**



**T&D**

**ENEL GREEN POWER**

Wind Farm "Palo Alto I"  
 AT/LT/230kV / **129 MW**  
 Aguascalientes  
**2016**



**CHILE**

**T&D**

**GRUPO SAESA**

Submarine Cable  
 6 km/23kV  
 Chile  
**2014**



**INDUSTRIAL  
INSTALLATIONS**

**NESTLÉ**

Industrial Plants in  
 Querétaro & Jalisco  
**2016**



**T&D**

**EVM / TSK**

Thermolectric Plant  
 "Valle Power I"  
 AT/230kV / GIS / **90 MW**  
 Estado de Mexico  
**2015**



**GENERATION**

**GRUPO AVANZIA**

PV Plant  
 "OMETEPEC"  
**500 KW**  
 Guerrero  
**2015**



**INDUSTRIAL  
INSTALLATIONS**

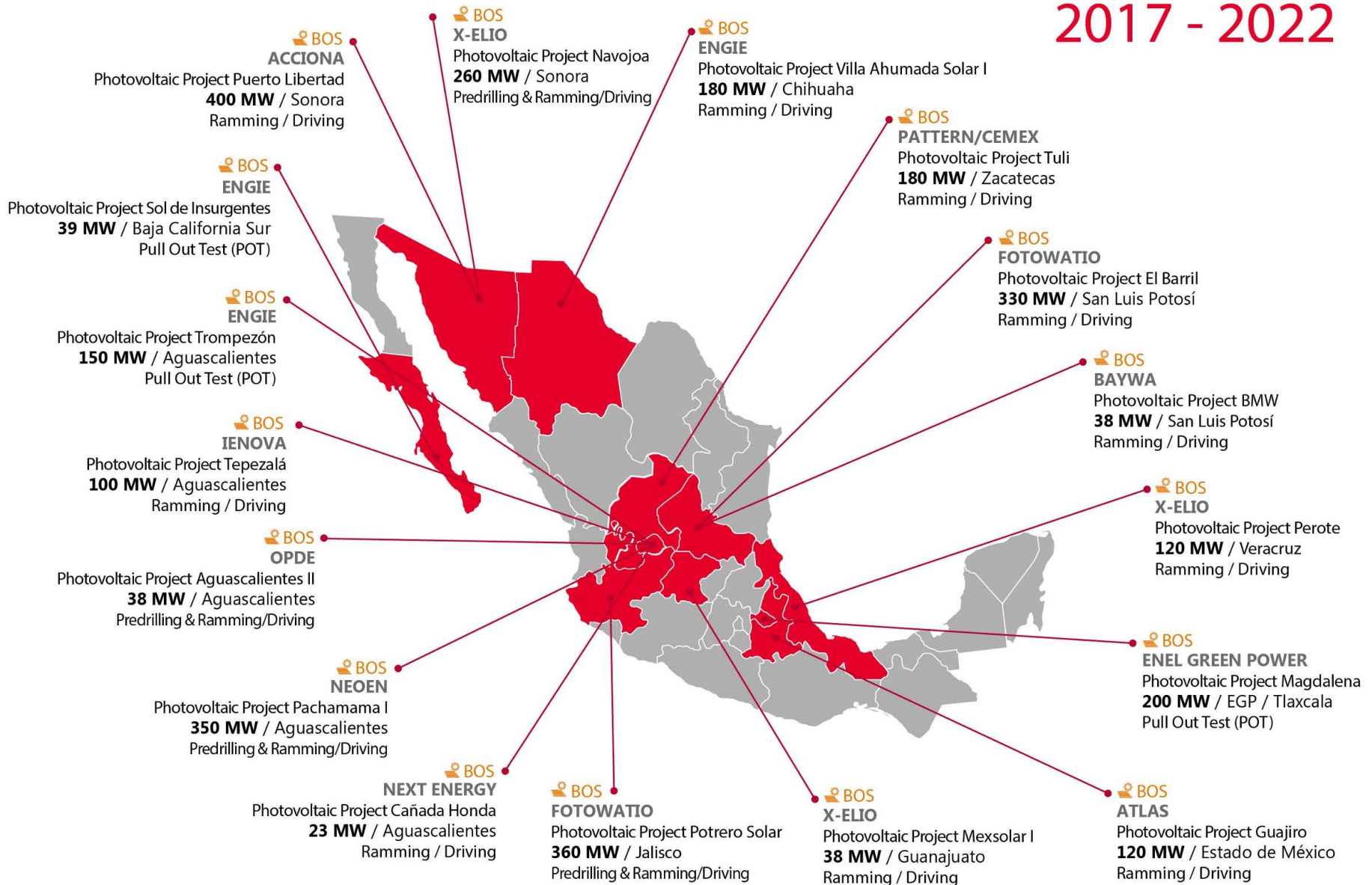
**ARENDAI / PEMEX**

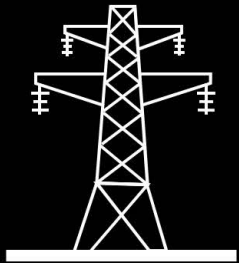
Gas collection station  
 "Lakach"  
 AT/LT/ 230 kV  
 Veracruz  
**2016**





# Mechanical Works in PV Projects 2017 - 2022





# Transmission y Distribution, **T&D**

SESELEC: HIGH VOLTAGE EPC

For Photovoltaic Energy, Wind, Hydroelectricm  
Geothermal, Thermal, Industrial, Projects and Public  
Works.







**Customer:** ENEL GREEN POWER

**Location:** Tlaxcala, Mexico

**Year:** 2019



## **SESELEC Scope:**

EPC Turnkey Project (Engineering, Supply, Civil & Electromechanical Works, Testing & Commissioning) for:

- 230 kV Step-up Substation
- 230 kV Switchyard Substation
- 0.5 km 2C (Zocac-93600-Texcoco) Interconnection



**Customer:** GRUPO DRAGON

**Location:** Jalisco, Mexico

**Year:** 2013-2014



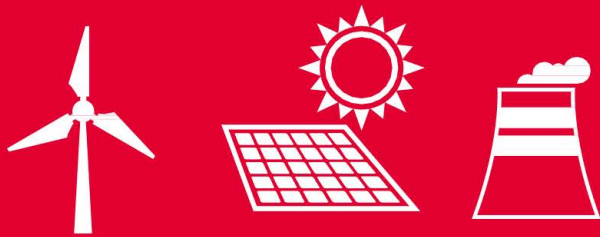
## **SESELEC Scope:**

EPC Works Project for:

- 23 / 230 kV Step-up Substation
- 230 kV, 1C de 5.85 + 2C de 0.48 km Transmission line
- CFE 230 kV Switchyard Substation







# Power Generation





**Customer:** CFE

**Location:** Sonora, Mexico

**Year:** 2023

**SESELEC Scope:**

**PV Plant & Interconnection full EPC Project**

- Basic & Detailed Engineering, "As – Built" Drawings
- PV Plant Civil & Electromechanical works, 115kV Step -UP SS Civil & Electromechanical works, 115kV, 26 Km Poles OHTL, Puerto Peñasco 115kV Switchyard extension
- Supply of PV Modules Trackers, Inverters, 120 MW Power Transformer, Cables, etc.
- Commissioning







**Customer :** INVENERGY

**Location:** Insurgentes, Baja California Sur, México

**Year:** 2022



## **SESELEC SoW:**

- EPC 39.3 MWp ( excl. panel and inverter)
- Energy / Battery Storage System 20MWh
- Step-up Substation 34.5/115 kV
- 0.1 km of OHTL for Interconnection
- 115 kV Switchyard Enlargement





**Customer:** IBERDROLA

**Location:** Caceres, Extremadura, Spain

**Year:** 2021



## **SESELEC SoW:**

- BOS 39.99MWp including civil, pile driving, mechanical and electrical works with testing and commissioning.
- This PV Plant will also have a 2MWh battery system and different technologies for the customer to showcase and test (1st of its kind) BOS including civil, mechanical, electrical works as well as commissioning of the PV scope of the power plant
- \*\*\* 2nd Project in Spain awarded after the customer tested SESELEC in 2 previous contracts





The Expert Partner in Mexico, LATAM, Spain and Portugal **for the Construction and Interconnection** of Power Plants to the HV Grid



# seselec

**MEXICO**

**SPAIN**

**CHILE**

**PORTUGAL**

contacto@seselec.com

[www.seselec.com](http://www.seselec.com)